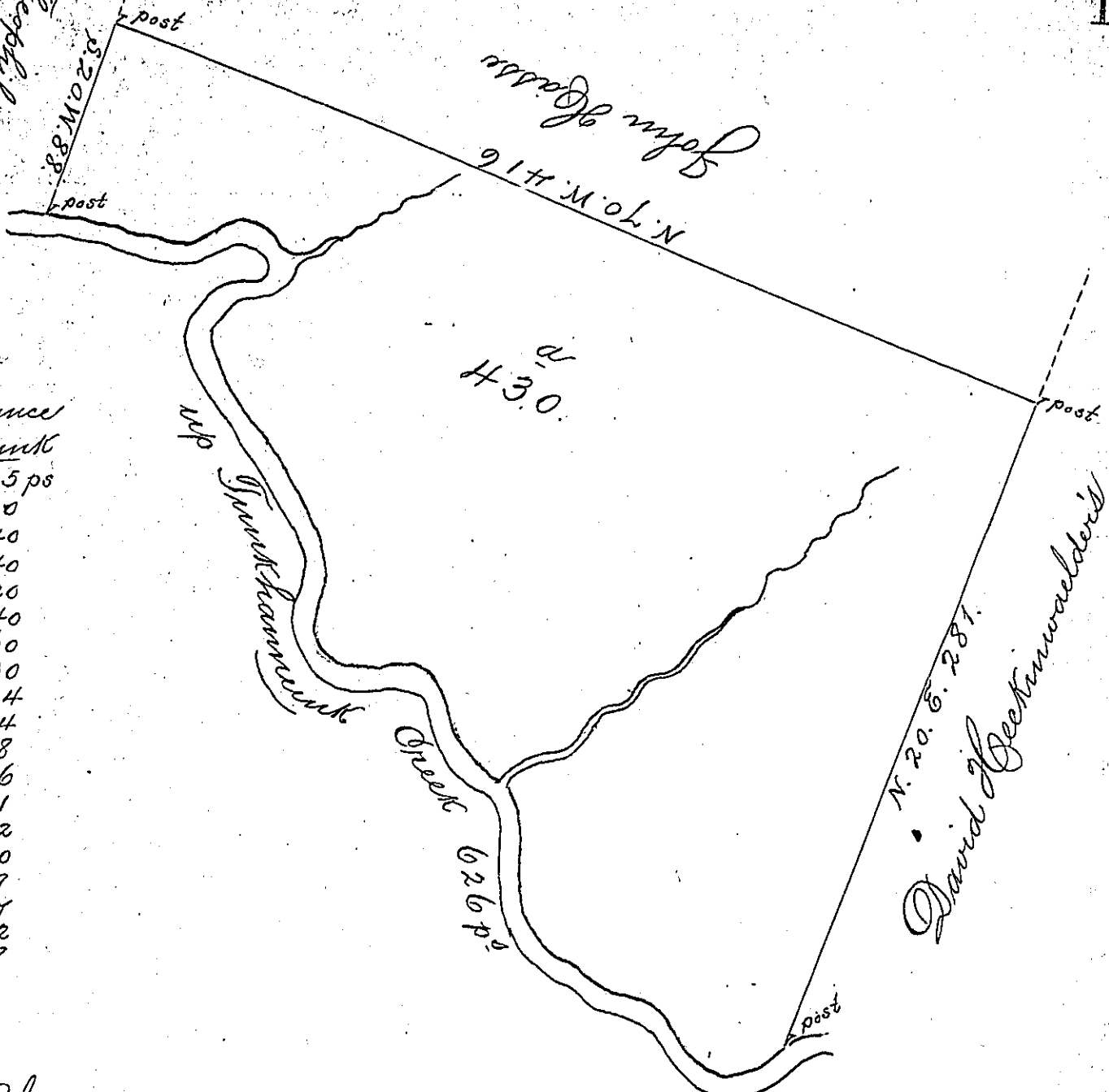


Bearing & distance
up Tunkhannock

1	S 80 E	65 ps
2	N 52 E	20
3	S 41 E	40
4	S 73 W	40
5	South	20
6	S 40 E	40
7	S 30 E	60
8	S 10 W	30
9	S 70 E	24
10	N 60 E	14
11	S 75 E	18
12	S 13 E	26
13	S 45 E	41
14	S 10 E	52
15	S 57 E	40
16	S 80 E	19
17	S 42 E	37
18	East	22
19	N 42 E	18



By Virtue of a Warrant dated the 19th November 1784
 Surveyed the 22^d August 1785 to Joseph Horsefield
 the above described tract of Land Situate on the North
 side of Tunkhannock Creek adjoining Beaver Dams in
 Northampton County Containing four hundred
 and thirty Acres and Allowance of Six p Cent V^l

John Lukens Esquire
 Surveyor General

p Geo. Palmer

IN TESTIMONY that the above is a copy of the original remaining on file in
 the Department of Internal Affairs of Pennsylvania, made
 conformably to an Act of Assembly approved the 16th day of
 February, 1833, I have hereunto set my Hand and caused
 the Seal of said Department to be affixed at Harrisburg,
 this fourth day of March 1902

James A. Pitta
 Secretary of Internal Affairs.